

Equipment status management solutions



✓ Safety ✓ Maintenance ✓ Identification

Get Equipped



Much more than equipment tags.

Scafftag Equip is the systematic status management package from the world leaders. It starts with an expert assessing your individual needs – drawing on 20 years experience, an unrivalled product range and a unique, best practice database of thousands of bespoke designs. Scafftag then work with you to deliver high-visibility, co-ordinated systems that communicate with your workforce to improve safety and maximise efficiency. Training tools, operational guidance and safety advice are all part of the on-going personal service. It all adds up to clearly improved business performance.

Request your free Scafftag Equip Performance Pack today at www.scafftag.com/equipme



Product information

You can get more in-depth information and download brochures on any of our products at www.scafftag.com/products



Request your free Scafftag Equip Performance Pack today at www.scafftag.com/equipme

Contents



Introduction

Status tagging systems – the essentials	04
The complete package to support your business	06
Clearly better for business.....	08

Customisation

Customisation to your requirements	09
--	----

Working at height

Scaffolding	10
Mobile towers	12
Ladders	14
Fall protection equipment.....	16
Access equipment.....	18
Customisation.....	19

Plant, machinery, vehicles and tools

Smaller plant / PAT testing / Hand arm vibration	20
Lifting equipment	22
Forklift trucks	24
Larger equipment, machinery and racking / shelving	26
Cranes and vehicles / Fire and emergency treatment equipment.....	28
Customisation.....	29

Workspace control

Confined spaces	30
Chemical hazards	32
Asbestos	34
Excavations and hoarding.....	36
Access barriers.....	38
Customisation.....	39

Processes and pipelines

Valves and pipelines	40
Processes.....	42
Lockout Tagout	44
Customisation.....	47

Status tagging systems – the essentials

Making latest status visible

Imagine a typical industrial site - a busy environment with people and equipment constantly moving and changing. Think about any item of equipment on your site.

How do you know if equipment is safe to use or know what maintenance has been carried out?

How do you identify it among the hundreds of similar items of equipment on site?

Without accurate, up to date and timely information, people are prone to make assumptions.

And assumptions can lead to potentially damaging decisions for both them and your business performance. Tracking the identity, usage, safety, maintenance and inspection status of each and every item of equipment is therefore critical.

Scafftag empowers people to make informed decisions by making information:

✓ Instantly visible ✓ Shared ✓ Available where it is needed most

In 1983, Scafftag introduced the innovative visible status tagging system for scaffolding and the name Scafftag has since become synonymous with scaffold inspection tagging. Scafftag has grown to now offer complete information management solutions through safety, maintenance and identification of all major industrial equipment and workspaces.

Holder and insert systems

Most status tagging systems have two components – a holder which attaches permanently to the equipment, and replaceable inserts. This creates a simple looped process for latest status and a clear data trail. You can not reuse inserts for future recording.

This ensures you have a permanent data trail of inspections and work carried out, as well as evidence in a court of law if you need it.



01

Empty holder displays:
Do not use



02

Equipment is inspected periodically, insert completed and placed in holder



03

If equipment should not be used, remove insert



Request your free Scafftag Equip Performance Pack today at www.scafftag.com/equipme



Standard holders (measurements in mm)

- ✓ 1 Scafftag® / 305h x 91w x 6d
- ✓ 2 Scafftag® SYS / 301h x 90w x 6d
- ✓ 3 Entrytag® / 285h x 153w x 6d
- ✓ 4 Multitag® / 212h x 55w x 6d
- ✓ 5 Unitag® / 46diam x 12d
- ✓ 6 Microtag® / 80h x 38w x 5d
- ✓ 7 Nanotag™ / 55h x 26w x 6d
- ✓ 8 Omnitag® / 171h x 131w x 10

Only Scafftag offers such a broad range of holders to suit different sized equipment and attachment requirements. Some of the same holders are overprinted with different designs to cover a number of applications.

With Scafftag, you can customise your own system using any holder in the range, plus your own tailor made inserts (see page 9).

Identification and process status tagging systems



For more temporary maintenance and identification purposes, Scafftag has an unrivalled range of insert only status tagging systems. Most clients use perforated tear-offs or interchangeable inserts to show the current stage of multiple phase processes.

They are specifically designed to operate alongside permit-to-work systems (where applicable) and can be supplied with unique ID numbers for absolute tracking and control.

Lockout Tagout systems



Lockout Tagout systems make equipment physically accessible only to those people permitted to carry out work. These systems work with a Scafftag visual status tagging system to enhance your information management and communication.

- ✓ Access control prevents usage as well as a visual warning
- ✓ Protects shift or multiple workers permitted to carry out work

Built-in peace of mind

There is little room for error in safety and maintenance. Through our knowledge, expertise and assured by our ISO accredited production processes all Scafftag systems:



- ✓ Are weatherproof, UV protected and durable to withstand the toughest industrial environments
- ✓ Reflect latest legislation and operating practices relevant to the specific application
- ✓ Comply with signs and labels legislation within your country

The complete package

Get the complete package

Scafftag provide a number of solutions that allow a total management system for recording and maintaining information.

Simple work procedures

Plan

Work is planned for assets on the Safetrak® PC either automatically or manually.

Work orders are then downloaded to operator's handheld computers.



01

Execute

Each asset is uniquely identified with a tag.

Handheld computer guides the operator through the work order, providing the location of each asset to perform a task on.

Once a specific asset is scanned, the system directs the operator through a series of questions and instructions collecting data accurately.



02

Record, report and review

Upload records from handhelds.

Compile and review timely and accurate reports from the Safetrak® system.



03



Safetrak®

Safetrak® is an electronic management tool that shares information on equipment and controls workflow for onsite employees and managers.

Safetrak® uses three components:

✓ Electronically chipped Scafftag status tagging systems

Rugged chips use either, long life RFID (Radio Frequency Identification) or barcode technology

✓ Handheld computers

Built to withstand industrial working conditions, including intrinsically safe models

✓ Specially designed software

Readymade modules are available for most applications plus it can be customised to meet your own requirements and work practices.

Safetrak® allows efficient monitoring and evaluation of information in a simple and organised process. It combines visual identification with the speed and information benefits of computerised recording. This facilitates standardisation of best working practice and company wide reporting for records and audits.

Other asset management software often tries to cover all equipment in a one size fits all solution. The downside is that you have to then spend time and money adapting it to the specific issue you face and your business processes. Safetrak® has developed individual readymade modules for all major types of equipment and issues which can also be customised to your own requirements and work practices.



Request your free Scafftag Equip Performance Pack today at www.scafftag.com/equipme



Scafftag books – ready made record management systems



Packaged in conveniently sized, easy to carry protective binders, offering protection against the weather and wear and tear for simple on site inspections and permanent record storage.

Contain step by step guidance on legislation, risk assessment and inspection checklists for specific equipment or issues.

They provide all the documents required for your own inspection management system and use carbon copy paper, so all relevant parties can keep separate copies and share the same information.



Scafffile®



Purpose designed wall mounted racking system which holds duplicates of corresponding inserts in use out on site. It gives you a centrally controlled, quick status reference system of current inspection and maintenance tasks.

Document / permit wallets

- ✓ UV resistant
- ✓ Moisture resistant easy access zip closure from top to bottom
- ✓ Transparent - easy to view documents
- ✓ A4 and A5 sizes available



Clearly better for business

Practice makes perfect

Over 20 years of market leadership means:



Solutions in every major language

- ✓ Superior product performance, service and support
- ✓ Unrivalled industry and equipment knowledge
- ✓ A proven track record of delivering improved business performance for large and small organisations
- ✓ Continuous innovation to solve the latest problems and accomplish best practice
- ✓ Customised solutions to your unique needs
- ✓ One-to-one, personalised service
- ✓ A wealth of value added resources
- ✓ Worldwide coverage and support

Improved business performance

Effective information management and communication is vital to successful safety, maintenance and asset management, which in turn can:

Reduce

- X Lost man hours
- X Downtime
- X Compensation costs
- X Insurance costs
- X Equipment damage & loss (preventative maintenance)
- X Costs of investigation & reporting

Improve

- ✓ Quality of work/service delivery
- ✓ Employee morale
- ✓ Public image

Scafftag can help you to put forward an overall business case for adopting our systems, justifying and securing further investment for your department.

Shared knowledge and best practice

Safety, maintenance and identification issues are shared by professionals the world over. Due to Scafftag's widespread coverage, we help to break down boundaries and transfer knowledge and best practice.

We know there are also unique traits and requirements – sometimes subtle, sometimes obvious – that characterise each industry and its sub-sectors. From offshore oil and gas platforms to local schools, construction sites and even movie sets, Scafftag has worked with each to develop a solution that works.

Over the past 23 years, Scafftag has worked closely with the major industry bodies including:

American Society of Safety Engineers (ASSE)

Association of Building Contractors (ABC)

National Access and Scaffolding Confederation (NASC)

National Safety Council

Scaffold Industry Association of America (SIA)

Step Change in Safety

The International Association of Drilling Contractors (IADC)

The Offshore Contractors Association (OCA)

The UK Offshore Operators Association (UKOOA)

Voluntary Protection Programs Participants' Assoc (VPPPA)



Request your free Scafftag Equip Performance Pack today at www.scafftag.com/equipme



You're unique... so are our solutions

The entire range of Scafftag status tagging systems and Safetrak® can be custom designed to help you manage virtually any issue and fit seamlessly with your business and systems.

Our team of experts will work with you to your specific business requirements. We are then able to:

- ✓ Adapt an existing system to incorporate your branding and unique business characteristics
- ✓ Provide a solution for rarer equipment/issues for which you require a system

Popular custom designs



Unique solutions



A library of ideas

We have literally thousands of designs developed for other clients and for rarer issues which you can use as an idea platform for your specific solution. So whatever your issue, contact us for a no-obligation solution.

Cost effective customisation

Scafftag does not charge any consultancy fees for working with you to develop your customised design. All you pay is a one off artwork set up charge with your first order. You can then reorder paying the price of the standard insert and holders used for your solution.

Terms & conditions apply, see www.scafftag.com/products

Unrivalled, limitless customisation options

A wide range of customisation options are available including:



- ✓ Status tagging system size and shape (see page 5 for our standard holders)
- ✓ Data to be displayed / recorded
- ✓ Visual design including logo, colours and fonts to reflect corporate branding
- ✓ Adapted to site requirements. E.g. Metal strips for magnetic detection in food plants
- ✓ Various attachment methods. E.g. cable tie; screw; ring; rivet; magnetic; adhesive; metal/plastic strip; permanent locking mechanisms



Working at height: Scaffolding

Scafftag®

The world leading scaffold status tagging system to help prevent working at height hazards and efficiently manage inspection procedures. It uses our unique holder and insert system to ensure the latest status is instantly visible at the point of use (see page 4). A Scafftag® should be fitted at all legal access points (normally ladder access) from first build stage and remain on the structure until dismantle. They can be attached via the porthole, locked in via a scaffold clip or secured with a pull tie. The Scafftag® is weatherproof, UV protected and durable to withstand the toughest industrial environments.

A wide range of inserts are available such as:

- ✓ Standard Scafftag® insert
- ✓ Colour coded inserts to indicate different loading classifications
- ✓ Prohibition notice inserts
- ✓ Different languages and regulations



For dimensions of our tagging systems see page 5



Request your free Scafftag Equip Performance Pack today at www.scafftag.com/equipme

Safetrak®

A

Scafftag® is compatible with the Safetrak® system (see page 6). A specific Safetrak® scaffolding inspection module is available or it can be customised according to your needs.

The Blue Book

B

- ✓ Collects together all the elements required to manage your scaffolding onsite in one protective binder
- ✓ Designed to fit in a 'Site Jacket' pocket
- ✓ Carbon copy report sheets enable shared records amongst all relevant parties
- ✓ Contains legislative and risk assessment guidance, inspection reports, fault notification reports and handover certificates
- ✓ Refills available

Scaffile®

C

Purpose designed wall mounted racking system which holds duplicates of corresponding inserts in use out on site. It gives you a centrally controlled, quick status reference system of current inspection and maintenance tasks.

Poster and pocket memo

D

The scaffolding poster and pocket memo are invaluable, handy on-site guides to scaffolding components and inspection checks. A wide range of free posters and pocket memos are available to Scafftag Equip members.

Register today at
www.scafftag.com/equipme



Mobile towers

Towertag

Towertag works in the same fashion as the Scafftag® system (see page 10) but is specifically designed for all types of mobile towers. It uses our unique holder and insert system to ensure the latest status is instantly visible at the point of use (see page 4).

The Towertag insert allows specific information on the movement of each tower scaffold and maximum safe working loads to be clearly displayed at the point of use.



For dimensions of our tagging systems see page 5



Request your free Scafftag Equip Performance Pack today at www.scafftag.com/equipme

Safetrak®

A

Towertag is compatible with the Safetrak® system (see page 6). A specific tower scaffold inspection module is available or it can be customised to your needs.

The Green Book

B

- ✓ Collects together all the elements to manage your mobile towers onsite
- ✓ Designed to fit in a 'Site Jacket' pocket
- ✓ Contains an inspection card, inspection checklist, legislation guidance and British Standards
- ✓ Refills available

Scaffile®

C

Purpose designed wall mounted racking system which holds duplicates of corresponding inserts in use out on site. It gives you a centrally controlled, quick status reference system of current inspection and maintenance tasks.

Poster and pocket memo

D

The mobile tower poster and pocket memo are invaluable, handy onsite guides to tower components and inspection checks. A range of free posters and pocket memos are available to Scafftag Equip members.

Register today at
www.scafftag.com/equipme



Ladders

Whether it is conventional ladders, step ladders, kick stools ("elephant's feet") or podiums and whether for temporary or fixed access, regular detailed inspections must be carried out and recorded. Only Scafftag has a range of solutions to help fulfil these legal requirements for all equipment under the 'ladder umbrella'.

All systems use our unique holder and insert system to ensure the latest status is instantly visible at the point of use (see page 4).

Laddertag®

The original and industry leading status tagging system to help control inspections, maintenance and identification of ladders.

Laddertag® is robust and highly visible, displaying information relating to a ladders class, inspection period and inspections due as well as a handy, quick-reference ladder inspection checklist. It is for this reason that it has been adopted by thousands of leading ISO9000 companies worldwide.



Podium Tag

A specifically designed status tagging system for podiums including a quick reference podium inspection checklist.



Steps and stools

Microtag® and Nanotag® (see page 16) are compact systems purpose designed for smaller equipment with minimal attachment space such as step ladders and kick stools ("elephants feet").



For dimensions of our tagging systems see page 5



Request your free Scafftag Equip Performance Pack today at www.scafftag.com/equipme



Safetrak® A

All tagging systems on the opposite page are compatible with the Safetrak® system (see page 6). A specific ladders and steps inspection module is available or it can be customised to your needs.



The Yellow Book B

- ✓ Collects together all the elements to manage your ladders onsite in one protective binder
- ✓ Designed to fit in a 'site jacket' pocket
- ✓ Carbon copy reports sheets enable shared records amongst all relevant parties
- ✓ Contains legislative and risk assessment guidance, ladder register, inspection reports and fault notification reports
- ✓ Refills available



Scaffile C

Purpose designed wall mounted racking system which holds duplicates of corresponding inserts in use out on site. It gives you a centrally controlled, quick status reference system of current inspection and maintenance tasks.

Poster and pocket memo D

The ladder poster and ladder and podium pocket memo are invaluable, handy onsite guides to ladder and podium components and inspection checks. A range of free posters and pocket memos are available to Scafftag Equip members.



Register today at
www.scafftag.com/equipme



Fall protection equipment

Scafftag has produced a wide range of solutions for fall protection equipment designed to fit different applications and specific client preferences.

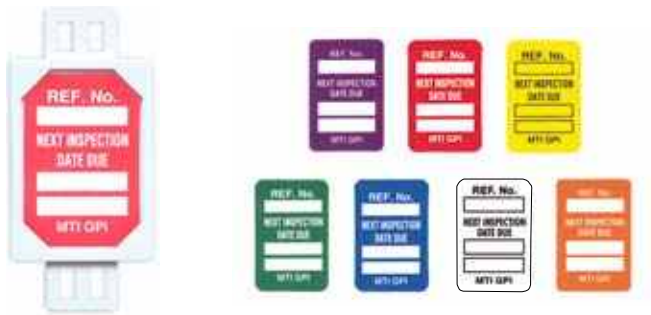
Our systems offer the user information such as unique reference number, record of past inspections and any inspection due. Harnesses and lanyards must be tagged individually.

All systems use our unique holder and insert system to ensure the latest status is instantly visible at the point of use (see page 4).

A choice of different colour inserts provides the option of additional visual qualification.

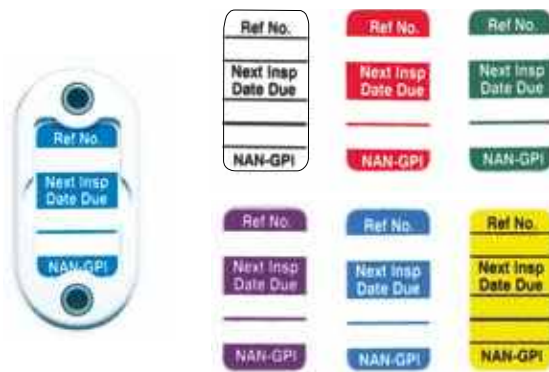
Microtag®

A popular system due to its ease of use and familiarity amongst equipment users. Attached by cable ties in two places – one on the full body harness in the chest region and one on the lanyard – Microtag® does not reduce harness strength.



Nanotag™

Provides total flexibility with the option for cable tie or split ring attachment. The split ring option is particularly useful for fall protection equipment, facilitating easier and quicker attachment.



For dimensions of our tagging systems see page 5



Request your free Scafftag Equip Performance Pack today at www.scafftag.com/equipme



Unitag®

An extremely robust permanent locking holder and insert system to help ensure security in terms of attachment. Plastic, stainless steel or nylon covered galvanized wire strops are available in differing lengths to suit your attachment requirements.



Safetrak®

Microtag®, Nanotag™ and Unitag® are compatible with the electronic Safetrak® system (see page 6). A specific fall protection equipment inspection module is available or it can be customised to your needs.



Access equipment

MEWP Tag

A complete status tagging system specifically designed to help control frequent inspections, maintenance and identification of MEWPs (Mobile Elevated Work Platforms).

The insert contains an easy-to-follow pre-use operator checklist on the front and the facility to record up to 32 inspections on the reverse. The holder provides multiple attachment options such as cable tie, adhesive, screw or rivet.



LOLER Tag

A specifically designed status tagging system for all equipment covered under the UK Lifting Operations Regulations (LOLER) 1998 including access platforms.

MEWP Tag and LOLER Tag both use our unique holder and insert system to ensure the latest status is instantly visible at the point of use (see page 4).



Safetrak®

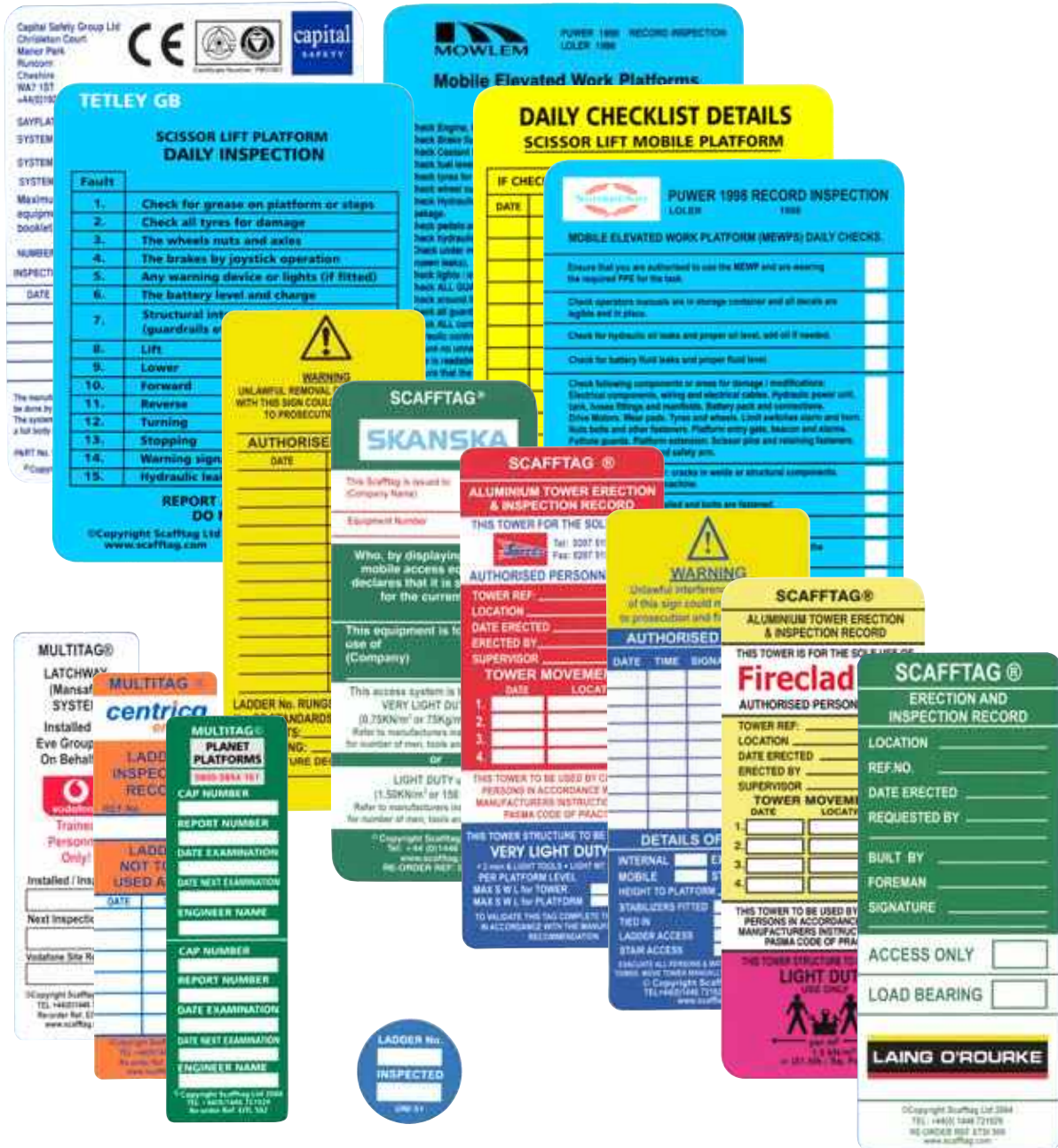
Both MEWP Tag and LOLER Tag are compatible with the electronic Safetrak® system (see page 6). A specific access equipment inspection module is available or it can be customised to your needs.



For dimensions of our tagging systems see page 5



Request your free Scafftag Equip Performance Pack today at www.scafftag.com/quipme



The sky's the limit

Remember, with Scafftag you can totally customise your own tagging systems or Safetrak® to reflect your unique issues, branding, work processes and operating environment.

To find out more, see page 9 or visit www.scafftag.com/products





Plant, machinery, vehicles and tools

Smaller plant / PAT testing / Hand arm vibration

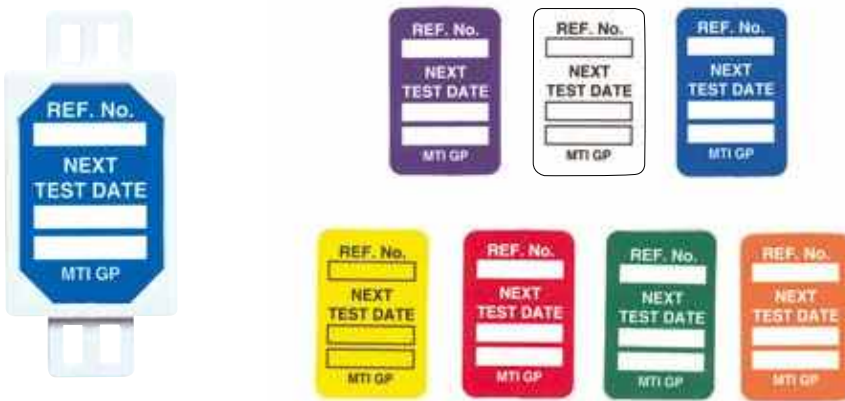
Microtag® and Nanotag™ are the most popular status tagging systems for portable appliance testing (PAT) and identification, allowing maximum visibility on equipment with minimal attachment space. They often replace existing self adhesive label options which are prone to damage and failure in tough industrial environments.

Both systems use our unique holder and insert system to ensure the latest status is instantly visible at the point of use (see page 4).

A choice of different colour inserts provides the option of additional visual qualification.

Microtag®

Can be attached to the tool's power lead with cable ties (either close to the power supply or near the handle) or on a non-intrusive part of the tool with an adhesive.



Nanotag™

As well as cable tie or adhesive attachment, Nanotag™ offers an alternative split ring attachment.



For dimensions of our tagging systems see page 5



Request your free Scafftag Equip Performance Pack today at www.scafftag.com/equipme



Hand arm vibration

There is also a specific range of Microtag® inserts designed specifically to help manage exposure to Hand Arm Vibration Syndrome (HAVS).

The Microtag® system has proven so successful that OCA (Offshore Contractors Association) prescribe it as the industry best practice for equipment subject to HAVS. The OCA's advice was in turn supported by UKOOA (United Kingdom Offshore Operators Association).

MTI 405 insert indicates noise levels as well as vibration.

MTI 451 insert incorporates the alternative new points per hour system under the regulations. The points per hour system helps users to keep a track of levels of exposure accumulated over the whole day (especially important when using a variety of tools and equipment) to keep within the maximum safe level of use.



Magnetic Detection Option



There is the facility to add metal strips/dots to any Scafftag holders and inserts for magnetic detection e.g. for food and beverage processing plants.

Safetrak®

Microtag® and Nanotag™ are both compatible with the electronic Safetrak® system (see page 6). Specific PAT testing and HAVS inspection modules are available or they can be customised to your needs.



Lifting equipment

Unitag®

An extremely robust permanent locking holder and insert system to help ensure security in terms of attachment. Once the two parts of the holder are locked together, it can only be removed with the use of wire cutters or pliers. Unitag® uses our unique holder and insert system to ensure the latest status is instantly visible at the point of use (see page 4).

Plastic, stainless steel or nylon covered galvanized wire strops are available in differing lengths to suit your attachment requirements.

A selection of coloured holders and Safe Working Load inserts are available providing the option of additional visual qualification.



Microtag® and Nanotag™

These two systems offer an alternative for equipment with minimal amount of attachment space such as eye bolts and D-shackles. Both systems have specific safe working load inserts available. Nanotag™ also provides the alternative option of split ring attachment.

A choice of different colour inserts are available for Nanotag™ and Microtag® providing the option of additional visual qualification.



For dimensions of our tagging systems see page 5



Request your free Scafftag Equip Performance Pack today at www.scafftag.com/equipme



LOLER Tag

A specifically designed status tagging system for all equipment covered under the UK Lifting Operations Regulations (LOLER) 1998 including larger equipment such as overhead cranes, lifting tables and loading platforms.

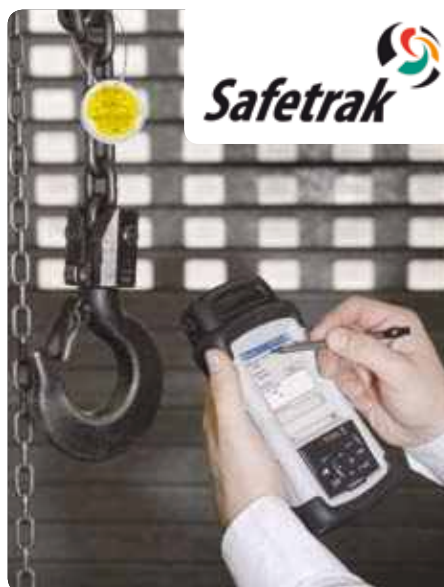


Magnetic Detection Option



There is the facility to add metal strips/dots to any Scafftag holders and inserts for magnetic detection e.g. for food and drink processing plants.

Safetrak®



Unitag®, Microtag®, Nanotag™ and LOLER Tag are all compatible with the electronic Safetrak® system (see page 6). A specific lifting gear inspection module is available or it can be customised to your needs.

Forklifts

Forkliftag®

A complete status tagging system to help control pre-shift inspections, maintenance and identification of forklift trucks. Forkliftag® uses our unique holder and insert system to ensure the latest status is instantly visible at the point of use (see page 4).

The insert contains an easy-to-follow pre-use operator checklist on the front and the facility to record up to 32 inspections on the reverse. The holder provides multiple attachment options such as cable tie, adhesive, screw or rivet.



For dimensions of our tagging systems see page 5



Request your free Scafftag Equip Performance Pack today at www.scafftag.com/equipme

As well as pre-use inspections carried out by forklift operators, periodic, comprehensive in-service inspections should also be conducted. Safetrak® or The Black Book™ provide ideal solutions to help fulfill these requirements.

Safetrak®

A

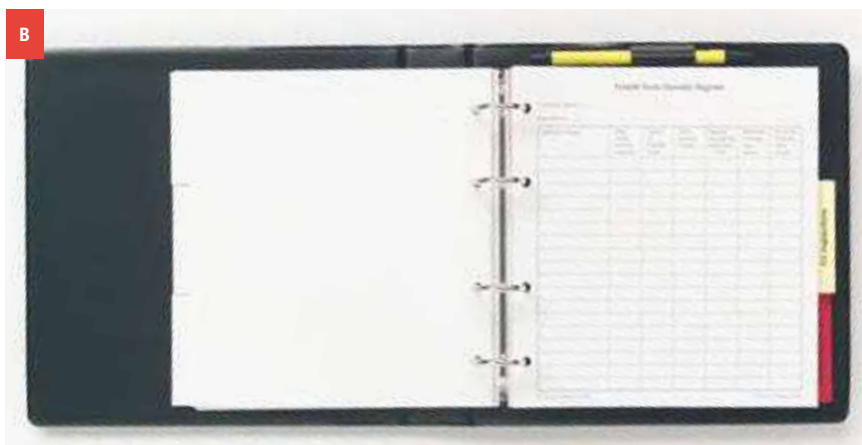
Forklifttag® is compatible with the electronic Safetrak® system (see page 6). A specific comprehensive forklift inspection module is available or it can be customised to your needs.



The Black Book™

B

- ✓ Collects together all the elements to manage your forklifts and operators in one protective binder
- ✓ Carbon copy reports sheets enable shared records amongst all relevant parties (management, operators and outsourced inspectors)
- ✓ Contains legislative and risk assessment guidance, forklift register, operator register, operator training records, comprehensive inspection reports and fault reports
- ✓ Refills available



Scaffile®

C

Purpose designed wall mounted racking system which holds duplicates of corresponding inserts in use out on site. It gives you a centrally controlled, quick status reference system of current inspection and maintenance tasks.



Poster

D

The forklift poster is an invaluable, handy onsite guide to forklift components and inspection checks. A range of free posters and pocket memos are available to Scafftag Equip members.



Register today at
www.scafftag.com/equipme



Larger equipment, machinery and racking/shelving

Scafftag provides several versatile holder and insert systems (see page 5) that can be used to help manage safety, maintenance and identification of all manner of larger equipment and machinery.

Multitag®

A compact system that provides a clear record of status and inspection. Particularly popular for managing production line machinery where control panels have restricted space for attachment.



Omnitag® and Entrytag®

Highly visual and versatile tagging systems that provide a large surface area and multiple fixing options (screw, rivet, adhesive and cable tie).

Omnitag is available in vertical (portrait) or horizontal (landscape) format.

Both systems are ideal for fitting to flat surfaces such as machinery panels for guard inspections and plant isolations, for example.



For dimensions of our tagging systems see page 5



Request your free Scafftag Equip Performance Pack today at www.scafftag.com/equipme



Racktag

Specifically designed Omnitag inserts are available for racking inspections carried out by an approved 'competent person'.



Safetrak®

Multitag®, Omnitag®, Entrytag® and Racktag are compatible with the Safetrak® system (see page 6). Specific racking and machine guard inspection modules are available or they can be customised to your needs.



Scaffile®

Purpose designed wall mounted racking system which holds duplicates of corresponding inserts in use out on site. It gives you a centrally controlled, quick status reference system of current inspection and maintenance tasks.



Cranes and vehicles / Fire and emergency treatment equipment

Cranes and vehicles

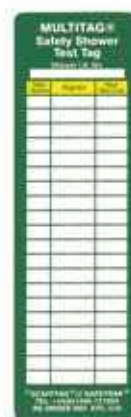
Scafftag can provide a complete solution for any type of industrial vehicle including cranes, dumpers, bobcats, bikes, golf carts, bulldozers and lorries to name but a few. All of the systems can be customised, so specific items and inspection data can be catered for, and company branding can be included if desired (see page 9).



Fire and emergency treatment equipment

Accidents such as fires and exposure to chemicals are incidents which thankfully do not arise too often. However, imagine the impact if vital equipment such as extinguishers, fire doors, showers or eyewash stations failed when such an event strikes.

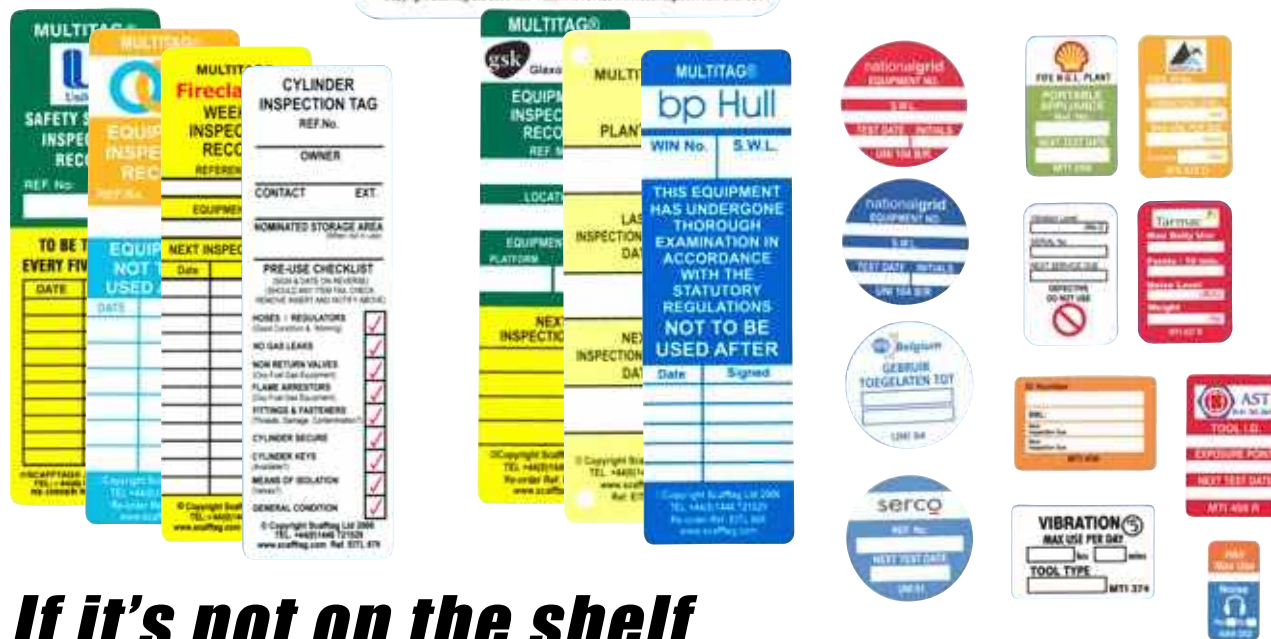
Scafftag provide an extensive range of solutions to help ensure that the inspection of essential equipment such as these are clearly detailed at the point of use, offering increased peace of mind in the event of an emergency.



For dimensions of our tagging systems see page 5



Request your free Scafftag Equip Performance Pack today at www.scafftag.com/equipme



If it's not on the shelf...

Remember, with Scafftag you can totally customise your own tagging systems or Safetrak® to reflect your unique issues, branding, work processes and operating environment.

To find out more, see page 9 or visit www.scafftag.com/products





Workspace control Confined spaces

Entrytag®

A complete confined space status tagging system to help prevent accidents and efficiently manage inspection procedures. It uses our unique holder and insert system to ensure the minimum requirements for entry (a legal duty) and latest status are instantly visible at the point of entry (see page 4).

The Entrytag® system is designed to operate alongside existing permit to work systems and other control procedures employed on site. The holder provides multiple attachment options such as cable tie, adhesive, screw or rivet.

Many Scafftag customers also adopt the Man in Confined Space Tag in conjunction with Entrytag®. The approved person(s) each have a dedicated Man in Confined Space Tag (containing their details) and attach it to the Entrytag® (using the metal ring supplied) before entering and remove it when leaving the confined space.

By counting the number of Man in Confined Space Tags at the point of entry, it is instantly clear how many people are working in the confined space.



Permit Wallets

- ✓ UV resistant
- ✓ Transparent – easy to view permits
- ✓ Moisture resistant easy access zip closure from top to bottom
- ✓ A4 and A5 sizes available



For dimensions of our tagging systems see page 5



Request your free Scafftag Equip Performance Pack today at www.scafftag.com/equipme

Safetrak®

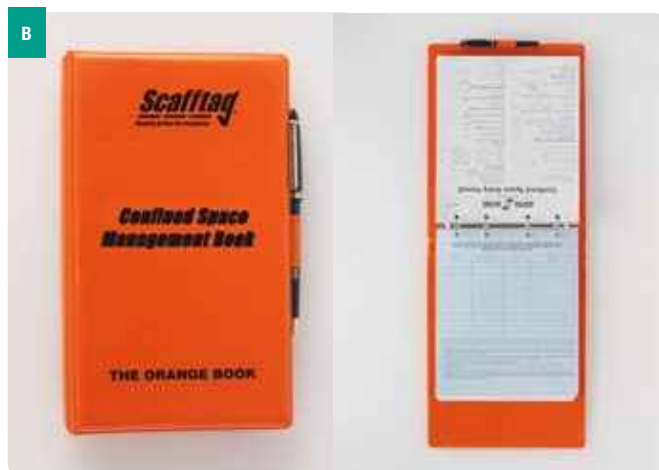
A

Entrytag® is compatible with the Safetrak® system (see page 6). A specific confined space inspection module is available or it can be customised to your needs.

**The Orange Book and File**

B

- ✓ Collects together all the elements to manage your confined spaces onsite in two protective binders
- ✓ Carbon copy reports sheets enable shared records amongst all relevant parties
- ✓ The Orange Book contains legislative and risk assessment guidance, risk assessment record sheets and an example completed entry permit
- ✓ The Orange File contains legislative and risk assessment guidance, a permit issue record with entry permits in triplicate and explanation sheet
- ✓ Refills available

**Scafffile®**

C

Purpose designed wall mounted racking system which holds duplicates of corresponding inserts in use out on site. It gives you a centrally controlled, quick status reference system of current inspection and maintenance tasks.



Chemical hazards

Chemtag®

Chemtag® is a complete hazardous substance status tagging system to help prevent accidents and efficiently manage inspection procedures.

It uses our unique holder and insert system to ensure the latest status is instantly visible at the point of use (see page 4).

Chemtag® contains all the pertinent information specific to the risks that hazardous substances pose such as:

- ✓ Substance type
- ✓ Details of hazards and precautions
- ✓ Action to be taken in case of emergency
- ✓ Supplier's name and emergency telephone number
- ✓ Details of how to dispose of the item

The Chemtag® insert should accompany the patient to hospital so that appropriate medical treatment can be administered. By removing the insert from the holder, the area is instantly put into "Do not use" status.



For dimensions of our tagging systems see page 5



Request your free Scafftag Equip Performance Pack today at www.scafftag.com/equipme



Document wallets

- ✓ UV resistant
- ✓ Transparent – easy to view documents
- ✓ Moisture resistant easy access zip closure from top to bottom
- ✓ A4 and A5 sizes available



Safetrak®

Chemtag® is compatible with the Safetrak® system (see page 6). A specific chemical hazards inspection module is available or it can be customised to your needs.



Scaffile®

Purpose designed wall mounted racking system which holds duplicates of corresponding inserts in use out on site. It gives you a centrally controlled, quick status reference system of current inspection and maintenance tasks.



Asbestos

Asbestos Tag

A complete asbestos status tagging system to ensure latest status is instantly visible at all areas at risk of having Asbestos Containing Materials (ACMs) present.

Asbestos Tag uses our unique holder and insert system (see page 4) to create simple visual mechanism- a green insert to indicate the area is asbestos-free, a red insert for danger or an empty holder for do-not-use as no inspection has been carried out or the survey was inconclusive.



For dimensions of our tagging systems see page 5

Adhesive labels

For areas where an Asbestos Tag cannot be attached, a range of self adhesive labels are available to identify "Hazardous" and "Asbestos Free" areas.



Request your free Scafftag Equip Performance Pack today at www.scafftag.com/equipme

Safetrak®

A

Asbestos Tag is compatible with the Safetrak® system (see page 6). A specific asbestos inspection module is available or it can be customised to your needs.

The Red Book™ and File

B

- ✓ Collect together all the elements to manage and store your onsite asbestos surveys/inspections in two protective binders
- ✓ Carbon copy reports sheets enable shared records amongst all relevant parties
- ✓ The Red Book™ contains legislative and risk assessment guidance, Building Asbestos inspection sheets, Asbestos sampling record sheets and Asbestos Register Sheets
- ✓ The Red File is a larger format of The Red Book™ with greater quantities of Asbestos Register Sheets for managing multi-site and/or older premises
- ✓ The Book and File can be purchased separately
- ✓ Refills available

Scaffile®

C

Purpose designed wall mounted racking system which holds duplicates of corresponding inserts in use out on site. It gives you a centrally controlled, quick status reference system of current inspection and maintenance tasks.


**Posters**

D

The two asbestos posters are invaluable, handy onsite guides to regulations. One provides a flow chart to identify your legal requirements and the other potential locations of Asbestos Containing Materials (ACMs). A range of free posters and pocket memos are available to Scafftag Equip members.



Register today at
www.scafftag.com/equipme

Excavations and hoardings

Excavation Tag

A specifically designed durable status tagging system to help prevent against the dangers of excavations. It uses our unique holder and insert system to provide up to date information on potential hazards, actions to be taken and daily and weekly inspections records.



Hoarding Tag

A similar system to Excavation Tag but specifically designed to help prevent hoarding failure.



For dimensions of our tagging systems see page 5



Request your free Scafftag Equip Performance Pack today at www.scafftag.com/equipme

Document wallets

A

- ✓ UV resistant
- ✓ Transparent – easy to view documents
- ✓ Moisture resistant easy access zip closure from top to bottom

A

**Safetrag®**

B

Excavation Tag and Hoarding Tag are compatible with the Safetrag® system (see page 6). Specific excavation and hoarding inspection modules are available or they can be customised to your needs.

B

**Scaffile®**

C

Purpose designed wall mounted racking system which holds duplicates of corresponding inserts in use out on site. It gives you a centrally controlled, quick status reference system of current inspection and maintenance tasks.

C



Access barriers

Barrier Tag

Safety barrier controlled areas are, by their very nature, high risk.

Barrier Tag ensures the latest status is instantly visible to both admitted and non-admitted personnel at all safety barrier controlled areas. Barrier Tag uses our unique holder and insert system (see page 4) to instantly communicate what hazards the area contains or to put it into no admission status.



Document wallets

- ✓ UV resistant
- ✓ Transparent – easy to view permits
- ✓ Moisture resistant easy access zip closure from top to bottom



Safetrak®

Excavation Tag is compatible with the Safetrak® system (see page 6). A specific barrier inspection module is available or it can be customised to your needs.



Scaffile®

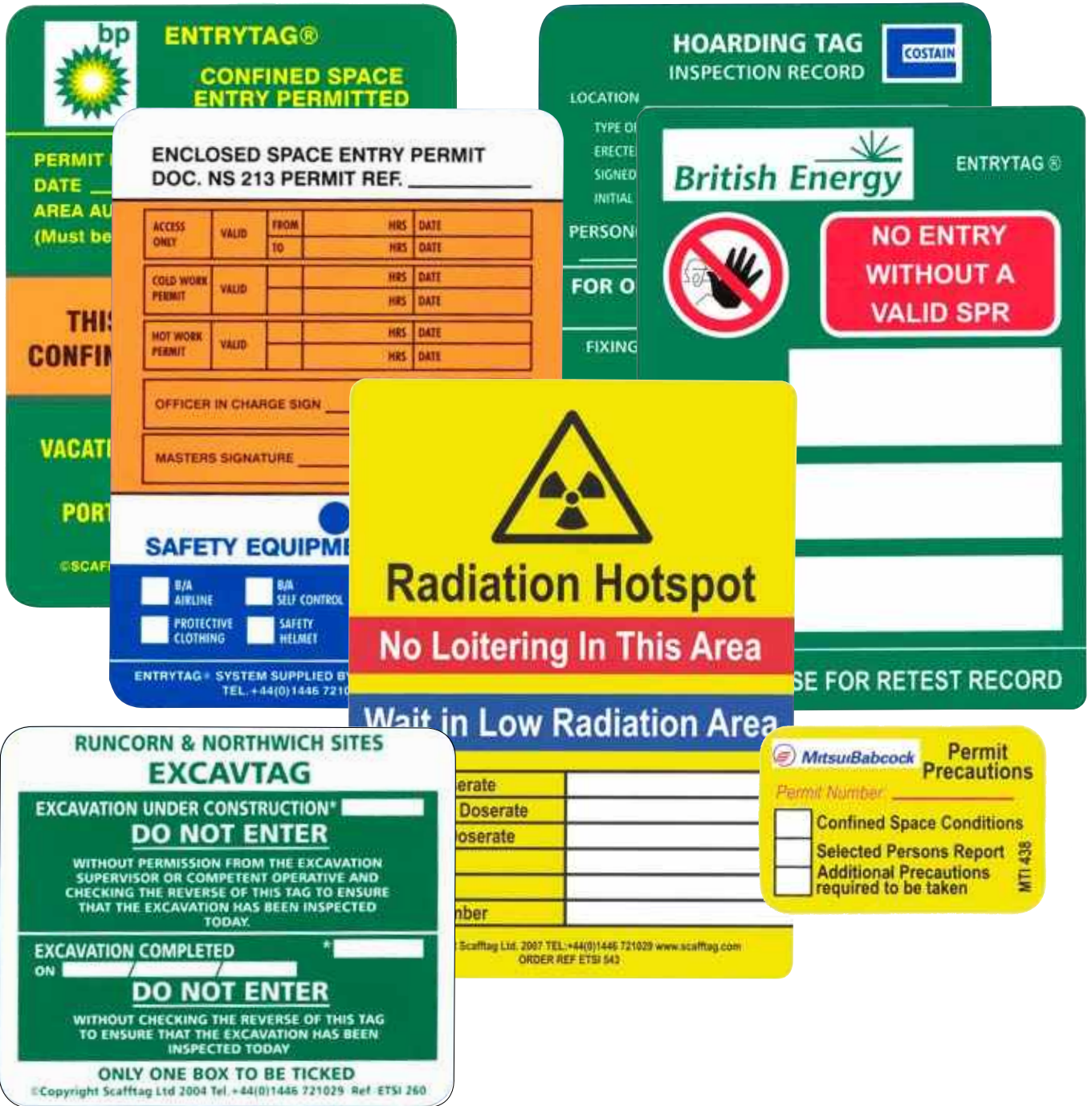
Purpose designed wall mounted racking system which holds duplicates of corresponding inserts in use out on site. It gives you a centrally controlled, quick status reference system of current inspection and maintenance tasks.



For dimensions of our tagging systems see page 5



Request your free Scaffitag Equip Performance Pack today at www.scaffitag.com/equipme



With Scafftag, you're never confined

Remember, with Scafftag you can totally customise your own tagging systems or Safetrak® to reflect your unique issues, branding, work processes and operating environment.

To find out more, see page 9 or visit www.scafftag.com/products





Processes and pipelines

Valves and pipelines

Unitag®

An ideal solution for valves and pipelines with a unique permanent locking system to help ensure a secure means of attachment.

Once the two parts of the holder are locked together, it can only be removed with the use of wire cutters or pliers. Unitag® uses our unique holder and insert system to ensure the latest status is instantly visible at the point of use (see page 4).

A choice of different colour inserts are available for Unitag® providing the option of additional visual qualification.



Valvetag®

A complete status tagging system to identify the status of valves and help control hazardous energy during maintenance and servicing. Valvetag® provides clear information available at the point of use that changes with the latest conditions.



For dimensions of our tagging systems see page 5



Request your free Scafftag Equip Performance Pack today at www.scafftag.com/equipme

Unique ID printing

123

Along with our other comprehensive customisation options, Scafftag has the facility to provide sequentially numbered holders and inserts for unique asset identification and status management.

Safetrak®

Unitag® and Valvetag® are compatible with the Safetrak® system (see page 6). Specific valve and isolation (mechanical and electrical) inspection modules are available or they can be customised to your needs.

Scaffile®

Purpose designed wall mounted racking system which holds duplicates of corresponding inserts in use out on site. It gives you a centrally controlled, quick status reference system of current inspection and maintenance tasks.



Processes

Isotag®

A complete status tagging system to help control mechanical and electrical isolation procedures and prevent inadvertent energising of the system to reduce potential for accidents. The system is normally two part perforated and consists of two identical sections which are completed by the person in charge. One section is attached to the asset and the other is held by the permitting authority, thereby clearly identifying the current status of the operation to all individuals. By using the perforation on the tag, each section can easily be removed without the need for either scissors or knives which may require additional permits.



Flangetag

Flange Tag is a complete status tagging system to help control inspection, modification and maintenance throughout the flange break / inspection process. The system is normally three or four part perforated and assists the user to clearly identify the various stages of the operation from the initial break to the re-energisation of the system. Flange Tags can be supplied with unique ID numbers for enhanced control and tracking.



Request your free Scafftag Equip Performance Pack today at www.scafftag.com/equipme

Spade/blind and other process management tagging systems

Scafftag has produced a wide range of tagging systems to help display the latest status of all manner of process management issues. These complete status tagging systems provide instant identification of equipment undergoing maintenance work and communicate vital information to the user, thereby helping prevent inadvertent actions that could lead to accidents and downtime.

Unique ID printing

123

Along with our other comprehensive customisation options, Scafftag has the facility to provide sequentially numbered holders and inserts for unique asset identification and status management.

Safetrak®

All process management tagging systems are compatible with the Safetrak® system (see page 6). Specific valve and isolation (mechanical and electrical) inspection modules are available or they can be customised to your needs.

Scafffile®

Purpose designed wall mounted racking system which holds duplicates of corresponding inserts in use out on site. It gives you a centrally controlled, quick status reference system of current inspection and maintenance tasks.



Lockout Tagout

Lockout Tagout is a planned safety procedure which involves turning off the energy supply of industrial machinery and equipment whilst maintenance work or repairs are being carried out. This procedure protects workers from the risks posed by live machinery or electricity.

These hazards can come from a whole range of energy sources including electricity, pneumatics, steam, gas and liquids to name but a few.

Scafftag provides a complete range of both **physical lockout** and **visual tagout** systems to provide a total management solution for all mechanical and electrical risks.

Mechanical lockout devices

Covering all mechanical risks including:

- ✓ Ball valves
- ✓ Gate valves
- ✓ Butterfly valves
- ✓ Gas cylinders
- ✓ Pneumatic plugs



Electrical lockout solutions

Covering all electrical risks including:

- ✓ Electrical plugs
- ✓ Panels
- ✓ Breakers

Tailored to your needs

The diversity of lockout devices and padlocks on offer from Scafftag mean we can provide an ideal solution to your specific requirements including:

- ✓ Size, shape and weight
- ✓ Shackle diameter and clearance
- ✓ Chemical, corrosion and temperature resistance
- ✓ Non-conductivity

Safetrak®

Specific Lockout Tagout management modules are available or they can be customised to your needs (see page 6).



Lockout Tagout Solutions
continues overleaf

Padlocks and locks

A

A complete range of locks to fit your selected lockout devices, covering all your unique requirements including:

- ✓ Size, shape and weight
- ✓ Shackle diameter and clearance
- ✓ Chemical, corrosion and temperature resistance
- ✓ Non-conductivity
- ✓ Keying and charting options
- ✓ Logoing and engraving
- ✓ Colour coding
- ✓ Metal detection

A



Visual tagout systems

B

Using a Scafftag visual tagout system clearly warns against accidental use at the point of re-energisation, further reducing risk and enhancing your information management and communication.

Scafftag provide a comprehensive range of off-the-shelf visual tagout systems or you can customise a design according to your needs (see page 9).

B



Lockout stations and boxes

C

A wide range of lockout stations are available of various sizes and requirements including adjustable and industrial strength options.

Group lockout boxes for large equipment ensure no single employee has access unless all employees have removed their locks.

C



Request your free Scafftag Equip Performance Pack today at www.scafftag.com/equipme



Fluid thinking

Don't see a solution to your specific needs? Remember, with Scafftag you can totally customise your own tagging systems or Safetrak® to reflect your unique issues, branding, work processes and operating environment. To find out more, see page 9 or visit www.scafftag.com/products

We enjoy a good challenge, so talk to us about yours today.





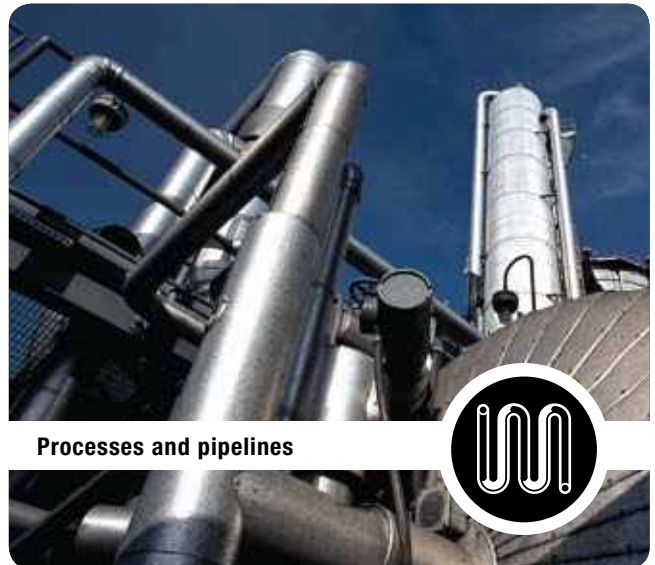
Working at height



Plant, machinery, vehicles and tools



Workspace control



Processes and pipelines



Scafftag® and Safetrak® are registered trade names of Scafftag Limited.

Scafftag® is not the generic word or name for labels, tags, inserts or their holders to designed to be attached to scaffolding or any other equipment and on no account should be so used. As the manufacturer, Scafftag Limited recommend that in operation it is the responsibility of the equipment user to ensure it is showing "Fit for use" and within the inspection dates. We reserve the right to alter without prior notification any specification of our products. ©Scafftag Limited 2007.